



COMPANY ANNOUNCEMENT

West Wits receives further uranium assays from current exploration program

Highlights

- West Wits has received additional outstanding uranium assays which have provided further confirmation as to consistent uranium mineralisation within the Bird Reef on the DRD Lease. The tested section comprises only 60% of the known Bird Reef extent on the DRD lease.
- Highlights included:
 - BD005 – 2.07m @ 0.45kg/t U₃O₈ (at 97.26m depth)
 - BD005 – 0.18m @ 1.43kg/t U₃O₈ (at 106.45m depth)
 - BD008 – 1.18m @ 0.35kg/t U₃O₈ (at 252.23m depth)
 - BD009 – 0.72m @ 0.62kg/t U₃O₈ (at 150.20m depth)

30 July 2008:

West Wits Mining Limited (ASX:WWI) is pleased to announce the Company has received further uranium assays from its initial DRD Lease Bird Reef exploration program. The company is pleased to report that uranium assay results for a further eight (8) holes, which can be reviewed in Table 1, further confirm the prospectivity of this targeted section of Bird Reef. These results now allow the Company to prepare a detailed in-fill drilling program aimed at delineating a potential mineral resource for the target. The Company recently released a conceptual target for this section of Bird Reef of 12.2 to 16.2 million pounds of uranium as well as 460,000 to 565,500 ounces of gold down to 500 metres.

On the 1st July 2008 West Wits announced receipt of its initial uranium assays from five (5) diamond drillholes from this program providing very prospective results comparable to historical mined grades in the area. As previously reported, the Bird Reef Conglomerate Group was never mined on the DRD Lease and was only limited to mining the gold mineralised White Reef within the Bird Reef Group on the Company's adjacent Rand Lease. However approximately 37 million pounds of uranium was extracted from three (3) of the Company's other leases to the west, namely, East Champ d'Or, Luipaardsvlei and West Rand Consolidated leases.

The Company is highly encouraged by the grades and widths of the intercepts returned from this program. These results confirm consistent uranium mineralisation over approximately 3.3km of identified strike along this targeted section of Bird Reef (figure 1). The exploration program drilled 6,767m of RC and Diamond, down to a maximum depth of approximately 550m below surface. A total of 16 RC holes with diamond tails were completed with a further 8 RC pre-collars drilled awaiting the follow-up program. The uranium assays indicate this 3.3km section of target reef is open at both ends and open at depth. A further 2.7km section of the Bird Reef within the DRD lease is yet to be investigated along with approximately 3.4km of Bird Reef which intersects the adjacent eastern Rand Lease.

WWI will now recommence drilling on the DRD lease to complete the eight (8) outstanding RC pre-collars with diamond tails and then move to a more detailed drilling phase with the aim of achieving a possible JORC compliant uranium and gold resource.



WEST WITS MINING

The Company is currently developing a detailed shallow drilling program to investigate the potential for near surface uranium and gold mineralisation which may be conducive to open-cut mining methods. A further deeper drilling program has also been initiated to assess detailed sedimentological features, including possible channelisation structures between 50m to 500m vertical depth. As part of the follow up program, underground access to the Bird Reef Group via existing historical infrastructure will be assessed. Two historical underground access points, the Mona Lisa Adit and Circular Shaft, are currently being evaluated.

For And On Behalf Of The Board

Grant Ferguson
Executive Director
West Wits Mining Limited

West Wits Mining Limited (ASX Code : WWI) is an Australian listed public company with exploration assets 20km west of Johannesburg, South Africa. West Wits has been formed to explore, evaluate and potentially extract gold and uranium from the Company's Project Areas located on the West Rand Goldfield of South Africa's Witwatersrand Basin. The Witwatersrand Basin is regarded as one of the largest mineralised gold and uranium systems in the world and is widely known for its rich, continuous multiple reef ore-bodies.

For Further Information Visit: www.westwitsmining.com

Or contact:

Mike Quinert - Chairman
Telephone: +61 (3) 9824 8166
Fax: +61 (3)9824 8161

Grant Ferguson - Executive Director
Telephone: 61 3 9824 8166
Fax: 61 3 9824 8161

The information in this report that relates to Exploration Results, Mineral Resources or Ore Reserves is based on information compiled by Mike Robertson, who is a member or fellow of a Recognised Overseas Professional Organisation.

Mike Robertson is employed by MSA Geoservices (Pty) Ltd

Mike Robertson has sufficient experience which is relevant to the style of mineralization and type of deposit under consideration and to the activities which he is undertaking to qualify as a Competent Person as defined in the 2004 Edition of the Australasian Code for reporting of Exploration Results. Mike Robertson consents to the inclusion in the report of the matters based on his information in the form and context in which it appears.

West Wits Mining Limited
ABN 89 124 894 060
Suite 1, 1233 High Street
Armadale VIC 3143
Australia
P +61 3 9824 8166
F +61 3 9824 8161
www.westwitsmining.com



WEST WITS MINING

Table 1

Hole ID	Easting	Northing	Azim	Dip	From	To	Width_m	Ave_U_ppm	Ave_U3O8_kg/t	Comments
BD003	84433	2896751	0	-63	37.74	37.91	0.17	108.44	0.13	
BD005	84439	2896932	20	-63	68.56	69.08	0.52	117	0.14	Includes 0.17m @ 0.64kg/t U3O8 Includes 0.22m @ 2.88kg/t U3O8
					89.67	90.84	1.17	117.74	0.14	
					97.26	99.33	2.07	378.63	0.45	
					106.45	106.63	0.18	1215	1.43	
BD008	86363	2896701	20	-60	198.99	199.24	0.25	270.27	0.32	Includes 0.6m @ 0.48kg/t U3O8
					203	203.2	0.2	379.77	0.45	
					210.19	210.66	0.47	198.55	0.23	
					221.12	223.09	1.97	126.1	0.15	
					236.29	236.89	0.6	200.37	0.24	
					239.58	239.85	0.27	353.52	0.42	
252.23	253.88	1.18	298.47	0.35						
BD009	86085	2896576	13	-64	115.06	115.34	0.28	584.74	0.69	Includes 0.3m @ 0.8kg/t U3O8 Includes 0.5m @ 0.8kg/t U3O8
					140.57	141.57	1	271.04	0.32	
					150.2	150.92	0.72	524.95	0.62	
					169.29	169.84	0.55	195.18	0.23	
BD010	85940	2896794	0	-64	220.65	220.87	0.22	181.51	0.21	
BPD011	86506	2896906	30	-63	271.57	271.94	0.37	169	0.2	Includes 1.5m @ 0.23kg/t U3O8
					273.92	277.19	3.27	115.11	0.14	
					281.47	281.95	0.48	324	0.38	
					282.62	283.02	0.4	193	0.23	
					284.47	285.47	1	154	0.18	
309.3	309.8	0.5	279	0.33						
BPD015	85525	2897183	20	-64	393.35	393.72	0.37	127.46	0.15	Includes 0.29m @ 0.78kg/t U3O8
					409.75	411.48	1.73	91.35	0.11	
					422.07	424.64	2.57	188.38	0.22	
					432.84	433.84	1	430.79	0.51	
BPD016	84912	2897232	20	-63	322.93	324.03	1.1	239.18	0.28	Includes 0.5m @ 0.43kg/t U3O8
					334.08	334.58	0.5	335.19	0.4	
					343.24	343.61	0.37	537.65	0.63	

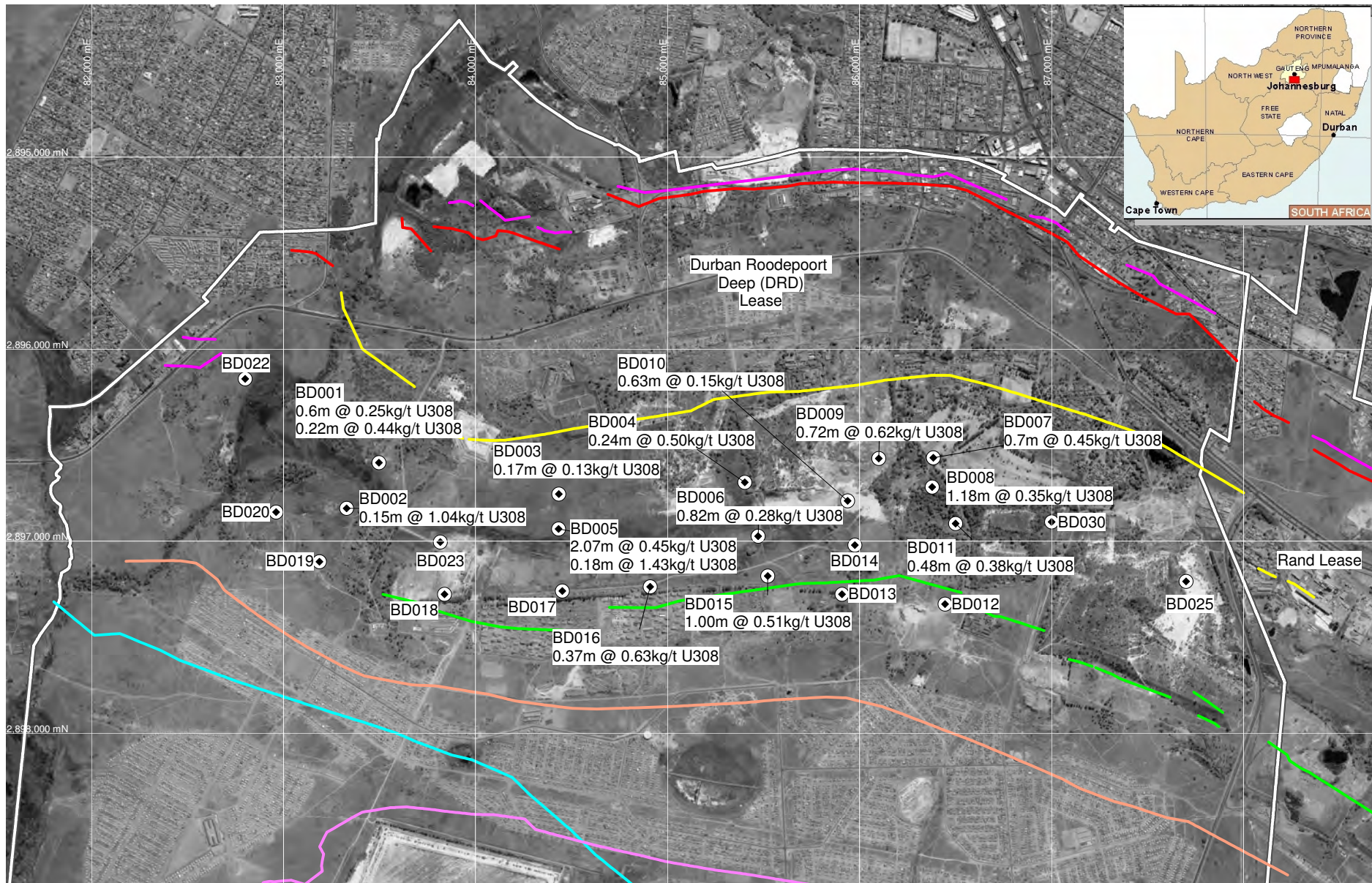


WEST WITS MINING

*Note: Mineralised intervals calculated using a 100ppm U cutoff
No high grade cutoff figure used
Intercepts are not true widths*

Uranium assays are performed by Genalysis Laboratory Services Pty Ltd (a NATA registered laboratory) in Perth, by four-acid digest with inductively coupled plasma mass spectroscopic ("ICP-MS") finish, and latterly by pressed pellet X-ray fluorescence in the interest of laboratory turnaround. Gold assays are performed by Genalysis using conventional fire assay procedures with atomic absorption spectroscopic ("AAS") finish. A Quality Assurance/Quality Control ("QA/QC") program forms part of the drilling, sampling and assay program on the West Wits project. This program includes chain of custody protocol as well as systematic submittal of certified reference materials, duplicates and blank samples into the flow of samples produced by the drilling.

West Wits Mining Limited
ABN 89 124 894 060
Suite 1, 1233 High Street
Armadale VIC 3143
Australia
P +61 3 9824 8166
F +61 3 9824 8161
www.westwitsmining.com



Reefs

- Livingstone
- Main
- South
- VCR
- Bird
- Kimberley
- Elsburg
- Black

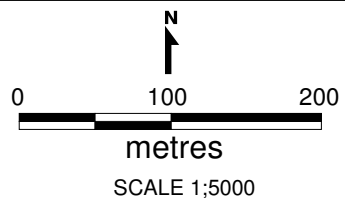
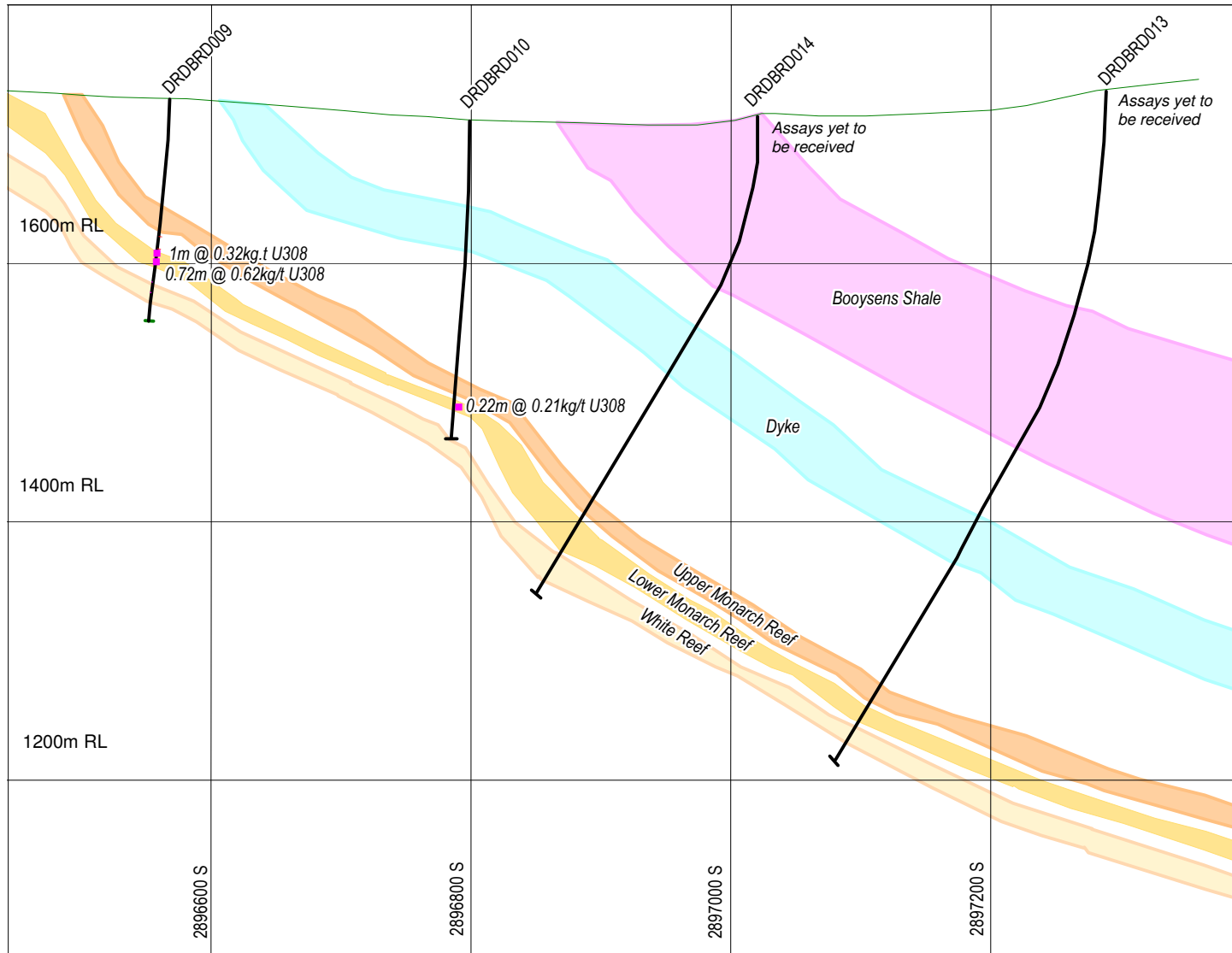
Lease Boundary
 Drillhole
 BD011 0.48m @ 0.38kg/t U308

Coordinates System: Gauss-Kruger LO 27 WGS

West Wits Mining Limited
 BIRD REEF OUTCROP
 PHASE 1 DRILLING PROGRAM URANIUM

0 0.5 1
 kilometres



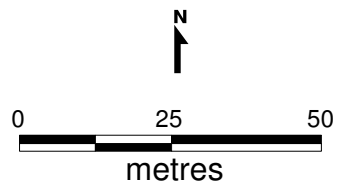
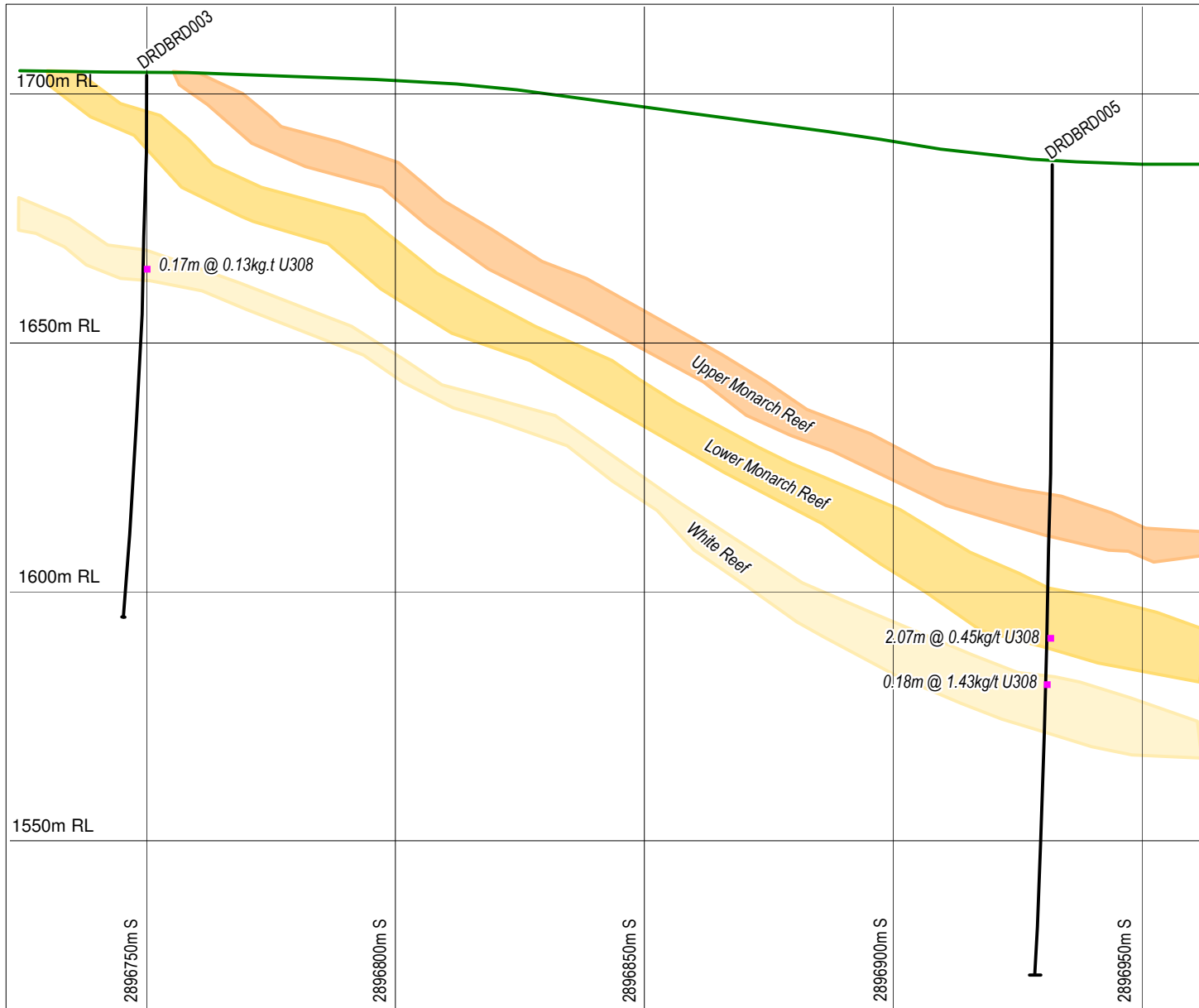


Coordinates System: Gauss Kruger LO 27 WGS

West Wits Mining Limited
 BIRD REEF URANIUM DRILLING PROGRAM
DRILL SECTION
86000mE



WEST WITS MINING



Coordinates System: Gauss Kruger LO 27 WGS

West Wits Mining Limited
 BIRD REEF URANIUM DRILLING PROGRAM
DRILL SECTION
84450ME



WEST WITS MINING